



Families United Network, Inc.

Fiscal Year 2014

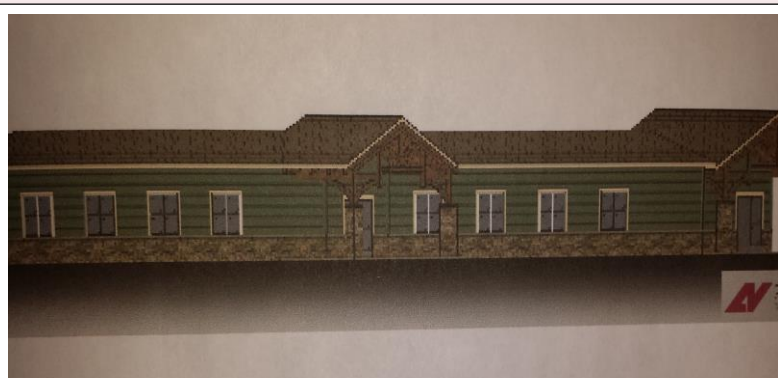
From the President and CEO



For the past eighteen years, our agency's administrative office functions have been housed in an old mansion in Muncy, PA that is now over 153 years old. While we have made numerous improvements over the years to make the building more energy efficient, we at the same time, have grown as an agency to the point we now have used every square foot of space for operations. Twenty years ago we used programmable typewriters, but now we have need for a server room to securely support our agency computer network and servers. Our agency staff size has increased from 56 employees to nearly 140 dedicated employees. During this time, our revenue has nearly quadrupled. Through our strategic planning process over the past two years, our Board of Directors and staff have planned for the construction of a new building on our campus in Muncy, PA to house not only our administrative offices, but also our North Central foster care & adoption office, and condominium office space for Intrada Technologies, an independent technology firm which has supported our state-wide agency's needs for over fifteen years. Presently the walls are being erected and we anticipate occupancy in April 2015.

While this is in process, we are actively preparing for our third accreditation cycle with the Council on Accreditation for our service programs. There are not many providers in the Commonwealth who have their full programs accredited, and we are excited to renew this achievement of meeting or exceeding national benchmarks for quality programming in child welfare.

Thomas A. Neubard



Who Are The Children We Serve?

Gender

Foster Care: 46% Female 54% Male

Age of Foster Children:

8% less than 1 year old
 36% age 1 to 5 years old
 28% age 6 to 10 years old
 18% age 11 to 15 years old
 9% age 16 to 18 years old
 1% age 18 and older

Referrals for Children

Foster Care: Increased 21%
 Residential Service: Increased 23%
 Receiving referrals for 1,854 children.

Placements for Children

Foster Care: Increased 10%
 Residential Care: Increased by 23%
 Placing a total of 409 children.

Common Reasons for Non Placements

No home for Sibling Groups
 No home due to the age of the child
 Residential facility is full when referred

Reason Children Enter Care

Drug and Alcohol Issues of Parents
 Failure Previous Placement
 Alleged Abuse of child

Adoption Services

Increased 15%
 Completing 622 units of service

Domestic Adoption Services

1 Adoption & served 75 families

Program Highlights

Private Adoption

Families United Network, Inc. continues to market to young women who may be experiencing an unplanned pregnancy and decide to seek an adoption. This past year, our agency increased our birth parent marketing, which resulted in an increase of calls from birth mothers interested in adoption information. We have workers available to provide services, answer birth parent questions about the adoption process, and connect them to community resources if they decide to parent. Most of the birth mothers decided to parent in the end, however we completed one infant placement with an adoptive family. Our agency also assists families in need of home studies for both domestic and the ever-changing international adoption programs.



Foster Care & Kinship

The foster care program with Families United Network, Inc. continues to stretch across the state of Pennsylvania. This year we reached into the North East region recruiting families and contracting with local children and youth agencies. Placements have begun and we are now also expanding our adoption services into this region.

Drug and Alcohol

The Drug and Alcohol Monitoring Service provided to York County Office of Children Youth and Families (OCYF) continues to receive an increasing number of referrals. Of all specimens collected and tested in the first four months of this fiscal year, 30% were found to be positive for one or more substances.

At this time there are 5 full-time employees serving as monitoring specialists. Presently FUN is seeking two part-time casual monitors to keep up with the demands to serve the number of referrals received from York County OCYF.

In October 2014, we began keeping all contacts in a centralized database. Monitors enter the data in the field, using tables, and are no longer required to maintain paper logs for services delivered. The tables are also used to email county workers with positive results or if any imminent threats are observed at the testing sites.

SWAN

Families United Network, Inc. continues to offer services to families adopting children through the foster care system. Families throughout the year were matched with children already in care or children registered on the Pennsylvania Adoption Exchange. There is always a need for families who are willing to consider the adoption of older children, children with special needs, and sibling groups.



Arborvale

Arborvale Manor is our community based Life Readiness Program for adolescent males ages 15 to 20. Our goal is to help guide young men through the difficult process of being in care and the extraordinarily difficult process of preparing themselves to leave care. Most of the young men we serve will have to make the transition to supporting and providing entirely for themselves within the near future. While this is an enormous challenge for any young adult, we have had some exciting results and experiences. The Arborvale Manor program continues to thrive with referrals for clients in need of services. Although our 8 bed program is relatively small, it's exciting to see the big changes and opportunities that our young men are achieving. While our clients are working hard to develop into successful young men, we are relentlessly working towards improving our services by identifying more supports, new opportunities, increased experiential learning, and improved facilities. Recently we were blessed to have the opportunity the complete an entire kitchen remodel for our program. This along with many other program improvements has allowed us to communicate to our clients that their worth is truly significant to us and we are here to invest in them!



New Kitchen at Arborvale

hardships if they have a support system of individuals to whom they can turn for assistance if/when needed. The longer term goal is to have the client establish a connection with a forever family for ongoing support after they have transitioned from placement to their independent adulthood.

Another exciting opportunity in the program is the client's ability to own and operate a motor vehicle. We recognize that owning and operating a motor vehicle is often central to one's ability to maximize potential for goal achievement when living independently.

Residents will prepare for discharge by seeking employment, housing and community support services in their chosen community following discharge.



Living Room in Transitional House

Transitional Living Program at Ashler Manor

A Transitional Living Program has been part of Families United Network's Strategic Plan and we were fortunate to be able to purchase a 3,480 sq. ft. 2-story home adjacent to the Ashler Manor campus. The home will serve four residents, ages 17 to 21 years of age. This home will offer an opportunity to develop the personal, vocational, and tangible resources necessary to begin independent young adulthood. Act 91, which allows children to remain in care after the age of 18, states they must be enrolled in postsecondary education or an equivalent, enrolled in an institution that provides postsecondary or vocational training, or are employed for at least 80 hours a month.

A Houseparent who lives in the home will offer support and guidance along with a full-time Case Manager. The Houseparent role is designed to empower the client with a minimally restrictive setting characterized by increased independence, minimal external supervision and intervention and guided support.

The program will not only increase the chances for success upon discharge, it also incorporates an opportunity for the client to establish a connection with a local individual or family functioning in a mentor capacity. We recognize that young adults stand a greater chance of success and are better able to manage

New Events and Programs

Grant Received-Ashler Manor Campus

The Pennsylvania Department of Education through the National School Lunch Program has awarded Families United Network a grant in the amount of \$12,137.86 to purchase a Vulcan Gas Range with a 36" stove top griddle and two convection ovens. This is an honor to be selected considering over 180 applications were received totaling over \$3 million in requests. We are very excited to incorporate this range into our Ashler Manor kitchen and appreciate being selected.

Our Mission

Families United Network, Inc. is dedicated to strengthening families by providing children and youth with a safe, nurturing, community environment through a continuum of services, which focuses on reunification

Resource Family Management Program

Families United Network entered into partnership with Dauphin County Social Services for Children and Youth to assist with the management of their existing and new resource families. In May of 2014, an office was opened in Harrisburg with a full complement of staff which included 4 family support workers, a secretary and supervisor. All of the employees have multiple years of experience working with families from a variety of sectors. This collective skill set has been paramount in assisting with the problems and struggles families face when working with the children and biological families. By implementing additional support and training, the goal is to have less placement disruptions and improve foster care experience for children and their families. The office currently provides support services and training to nearly 90 resource families, and continues to train and interview a number of prospective foster/kinship families. We are excited to continue our collaboration and look forward to helping families prepare and provide a supportive, loving, healing home for the children and families we

Grant Received-Ashler Manor Campus

On October 28, 2014, The Pennsylvania Department of Education, Division of Federal Programs, recognized the Ashler Manor Program in Muncy as a Distinguished Institution in the Commonwealth during the 2013-2014 school year for our outstanding Title I Program. In addition, the program was awarded a \$5,000 grant.

The driving goal over the past three years has been to bolster the academic services offered to students at the Ashler Manor campus. That process has included the addition of a Smart Board, Promethean Board, and the purchase of Kindle e-readers for client use. In addition, we have endeavored to build a learning garden. For several years we have used the growing of vegetables in our garden as a learning experience to enrich the educational experience afforded to clients of the Ashler Manor residential programs. To take this a step further, our plan is to build a greenhouse on campus, from our Title I Award monies, so we can grow vegetables and herbs year round. The plants grown in the greenhouse will be transferred to the garden, educating the residents on how to calculate the best options for planting each vegetable and measuring and logging vegetable growth. The residents also have an opportunity to experience harvesting and food preservation of the vegetables; such as learning how to freeze and can. This garden project is a source that will continue to reward our residents for many years and teach life-long skills.



Board of Directors



**Families United Network, Inc.
Ashler Manor Advisory Board**
Chris Smith Woody Shaner Paula Miller

Foster Care & Adoption Program Offices

South Central
2 Market Plaza Way
Suite 4
Mechanicsburg, PA 17055

North Central
1601 Sycamore Rd.
Suite 3B
Montoursville, PA 17754

Scranton
1006 Pittston Avenue
Suite 200
Scranton, PA 18505

Western Office
One Rodi Plaza
655 Rodi Road,
Suite 300
Pittsburgh, PA 15235

Mount Joy
412 South Angle Street
Mount Joy, PA 17552

Administrative Office
276 Ashler Manor Drive
Muncy, PA 17756

Harrisburg
2090 Linglestown Road
Harrisburg, PA 17110

Residential Programs

Arborevale Manor
2016 Millersville Pike
Lancaster, PA 17603

Ashler Manor
276 Ashler Manor Drive
Muncy, PA 17756

Visit us Online@
www.families4kids.org

Let us know how we are doing!
Please take less than a minute
to give us your comments
on our
Feedback Survey



*Referrals have increased by 21%,
increasing placements by 10% in the
foster care programs, and 23% in the
residential programs.*

*The length of stay in care has
decreased by 4% of clients served,
leaving 71% foster care achieving
permanency and 27% of clients
leaving the residential program
completing the requirements of the
program.*

